



• Design • Project • Manufacture • Assembly Complete Turn-key Solutions

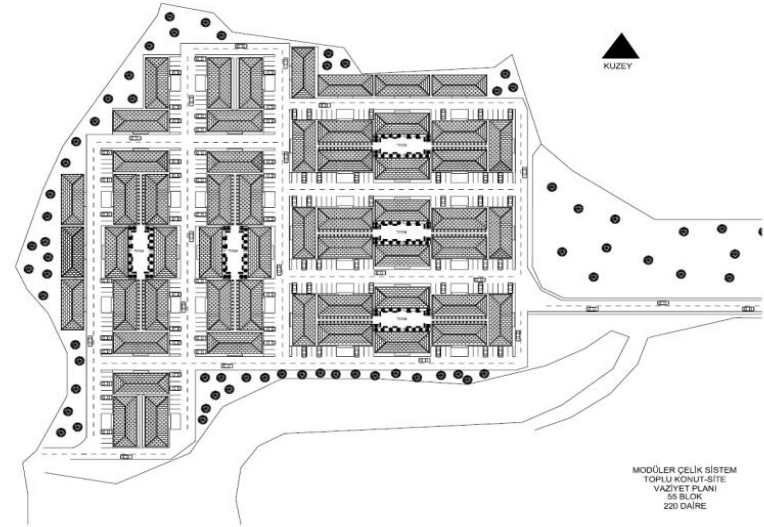
COMPLETED AND CONCEPT PROJECT FILES

[www.devotra.nl](http://www.devotra.nl)

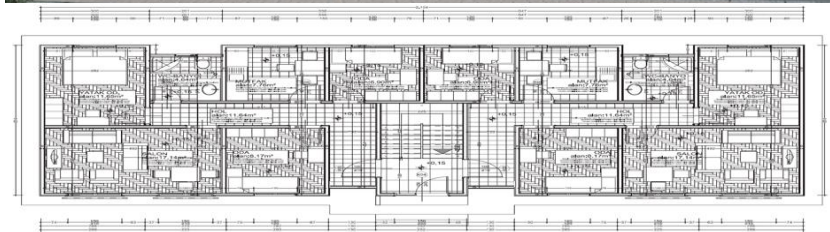
## SOCIAL BUILDING PROJECTS

• Social Housing • School • Clinic • Mosque • Management Center • Orphanage • Training Center • Emergency Center

# SOCIAL HOUSING



<b>Brand</b>	: Kozalife
<b>Project Name</b>	: Social Housing
<b>Project Place</b>	: İstanbul / Turkey
<b>Customer Info</b>	: İstanbul Municipality
<b>Project Status</b>	: Concept project completed
<b>Construction Period</b>	: 12 months
<b>Project Includes</b>	: 55 blocks - 220 apartments / 85 m2 each apartment
<b>Construction System</b>	: Modular Steel Construction Concrete infrastructure Modular decorative fiber cement exterior cladding Rockwool insulation Special gypsum board interior cladding WC, shower and kitchen inside the apartments



# MANAGEMENT CENTER



<b>Brand</b>	: Quickit Building
<b>Project Name</b>	: Management Center
<b>Project Place</b>	: Reyhanlı / Turkey
<b>Customer Info</b>	: IHH Humanitarian Relief Foundation
<b>Project Status</b>	: Completed
<b>Construction Period</b>	: 4 months
<b>Project Includes</b>	: 2400 m2
<b>Construction System</b>	: Modular Sandwich Panel Systems Concrete infrastructure Special form galvanised assembly profiles Decorative insulated sandwich wall panels Strengthen insulated sandwich panel roof Doors, windows, electricty, PVC floor cladding Kit system WC&shower, kitchen, air conditioning





# SCHOOL



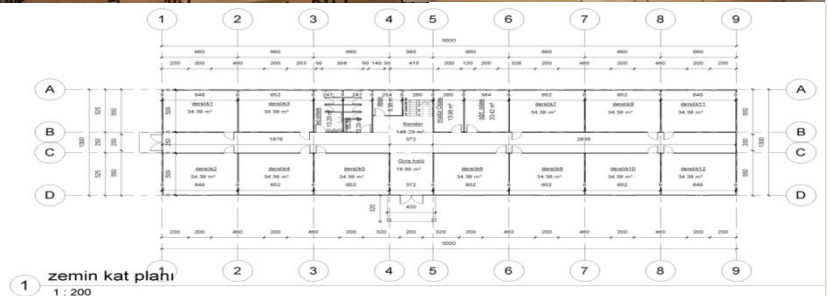
<b>Brand</b>	: Quickit Building
<b>Project Name</b>	: School
<b>Project Place</b>	: Kilis / Turkey
<b>Customer Info</b>	: IICO and IHH JV
<b>Project Status</b>	: Completed
<b>Construction Period</b>	: 3 months
<b>Project Includes</b>	: 4 schools 1250 m2 each
<b>Construction System</b>	: Modular Sandwich Panel Systems
	Concrete infrastructure
	Special form galvanised assembly profiles
	Decorative insulated sandwich wall panels
	Strengthen insulated sandwich panel roof
	Doors, windows, electricty, PVC floor cladding
	WC, cafeteria, air conditioning, fire alarm systems



# SCHOOL



- Brand** : Quickit Building
- Project Name** : School
- Project Place** : Kilis / Turkey
- Customer Info** : AFAD, IICO and IHH JV
- Project Status** : Project work completed, starting
- Construction Period** : 3 months
- Project Includes** : School with 24 classrooms - 1350 m2 each
- Construction System** : Modular Steel Construction
- Concrete infrastructure
  - Special form galvanised assembly profiles
  - Decorative insulated sandwich wall panels
  - Strengthen insulated sandwich panel roof
  - Doors, windows, electricity, PVC floor cladding
  - WC, cafeteria, air conditioning, fire alarm systems



# CLINIC



<b>Brand</b>	: Quickit Building
<b>Project Name</b>	: Clinic
<b>Project Place</b>	: Kilis / Turkey
<b>Customer Info</b>	: IICO and IHH JV
<b>Project Status</b>	: Completed
<b>Construction Period</b>	: 3 months
<b>Project Includes</b>	: Clinic 280 m2 4 units
<b>Construction System</b>	: Modular Sandwich Panel Systems
	Concrete infrastructure
	Special form galvanised assembly profiles
	Decorative insulated sandwich wall panels
	Strengthen insulated sandwich panel roof
	Doors, windows, electricity, PVC floor cladding
	WC, cafeteria, air conditioning, fire alarm systems





# CLINIC



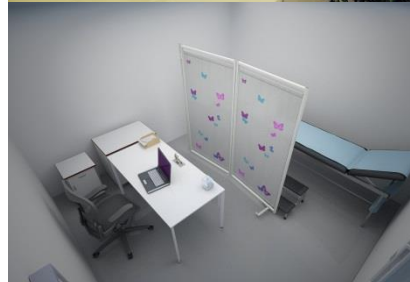
<b>Brand</b>	: Quickit Building
<b>Project Name</b>	: Clinic
<b>Project Place</b>	: Zambia
<b>Customer Info</b>	: UNDP - Devotra
<b>Project Status</b>	: Concept project completed
<b>Construction Period</b>	: 3 months
<b>Project Includes</b>	: Clinic 115 m2 12 units / 2 models
<b>Construction System</b>	: Modular Sandwich Panel Systems Concrete infrastructure Special form galvanised assembly profiles Decorative insulated sandwich wall panels Strengthen insulated sandwich panel roof Doors, windows, electrickty, PVC floor cladding WC, cafeteria, air conditioning, fire alarm systems



# CLINIC



<b>Brand</b>	: Quickit Building
<b>Project Name</b>	: Clinic
<b>Project Place</b>	: Kilis / Turkey
<b>Customer Info</b>	: Kilis Governor
<b>Project Status</b>	: Project work completed, starting
<b>Construction Period</b>	: 4 months
<b>Project Includes</b>	: Clinic 800 m2 - 2 storey
<b>Construction System</b>	: Modular Steel Construction
	Concrete infrastructure
	Special form galvanised assembly profiles
	Decorative insulated sandwich wall panels
	Strengthen insulated sandwich panel roof
	Doors, windows, electricity, PVC floor cladding
	WC, cafeteria, air conditioning, fire alarm systems





# MOSQUE



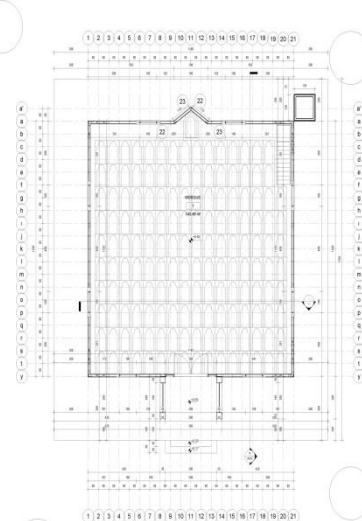
<b>Brand</b>	: Quickit Building
<b>Project Name</b>	: Mosque
<b>Project Place</b>	: Elbeyli / Turkey
<b>Customer Info</b>	: IICO and IHH JV
<b>Project Status</b>	: Completed
<b>Construction Period</b>	: 3 months
<b>Project Includes</b>	: Mosque 320 m2 - 4 units
<b>Construction System</b>	: Modular Sandwich Panel Systems Concrete infrastructure Special form galvanised assembly profiles Decorative insulated sandwich wall panels Strengthen insulated sandwich panel roof Doors, windows, electricty, carpet floor cladding



# MOSQUE



<b>Brand</b>	: KozaLife
<b>Project Name</b>	: Mosque
<b>Project Place</b>	: Middle East, Africa and Asia Countries
<b>Customer Info</b>	: Islamic Development Bank
<b>Project Status</b>	: Concept project completed
<b>Construction Period</b>	: Depends on the quantity
<b>Project Includes</b>	: Mosque 144 m2
<b>Construction System</b>	: Modular Steel Construction Concrete infrastructure Modular decorative fiber cement exterior cladding Rockwool insulation Special gypsum board interior cladding Air conditioning

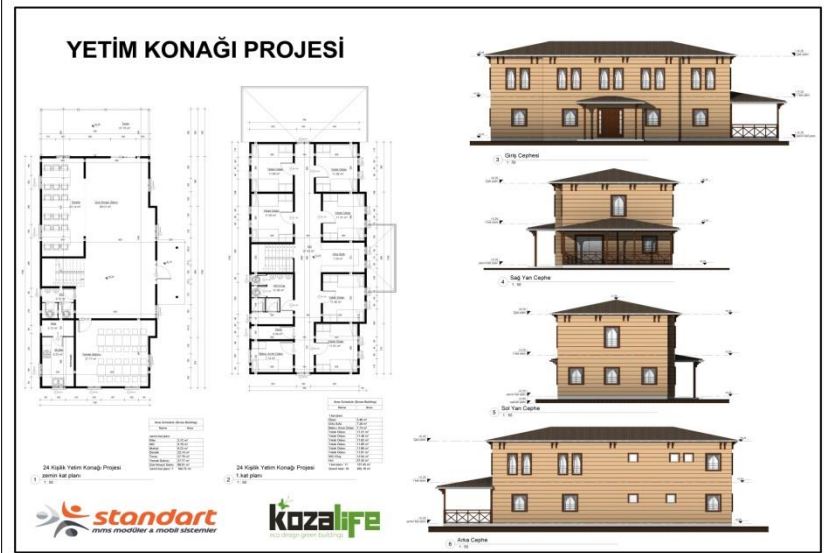




# ORPHANAGE



<b>Brand</b>	: Kozalife
<b>Project Name</b>	: Orphanage
<b>Project Place</b>	: General concept for non developed African and Asian countries
<b>Customer Info</b>	: IHH Humanitarian Reliefe Foundation
<b>Project Status</b>	: Concept project completed
<b>Construction Period</b>	: 2014-2016 planned
<b>Project Includes</b>	: Orphanage 230 m2 200 units - 2 storey
<b>Construction System</b>	: Modular Steel Construction Concrete infrastructure Modular decorative fiber cement exterior cladding Rockwool insulation Special gypsum board interior cladding Air conditioning, WC, fire alarm systems

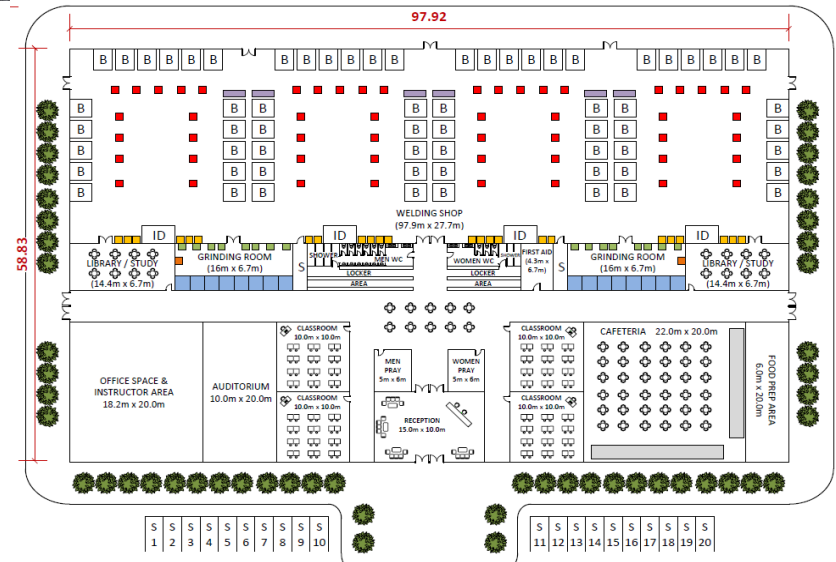




# TRAINING CENTER



<b>Brand</b>	: KozaLife
<b>Project Name</b>	: Training Center
<b>Project Place</b>	: Ras Al Khaimah / UAE
<b>Customer Info</b>	: RAY Skills
<b>Project Status</b>	: Concept project completed
<b>Construction Period</b>	: 6 months
<b>Project Includes</b>	: Welding Training Center 5760 m2
<b>Construction System</b>	: Modular Steel Construction
	Concrete infrastructure
	Special form galvanised assembly profiles
	Decorative insulated sandwich wall panels
	Strengthen insulated sandwich panel roof
	Doors, windows, electricty, air conditioning



# MANAGEMENT CENTER



<b>Brand</b>	: KozaLife
<b>Project Name</b>	: Emergency Coordination Center
<b>Project Place</b>	: Bursa / Turkey
<b>Customer Info</b>	: Bursa Municipality and IHH JV
<b>Project Status</b>	: Concept project completed
<b>Construction Period</b>	: 6 months
<b>Project Includes</b>	: Coordination and Management Center 3325 m2
<b>Construction System</b>	: Modular Steel Construction Concrete infrastructure Modular decorative fiber cement exterior cladding Rockwool insulation Special gypsum board interior cladding Air conditioning, WC

